

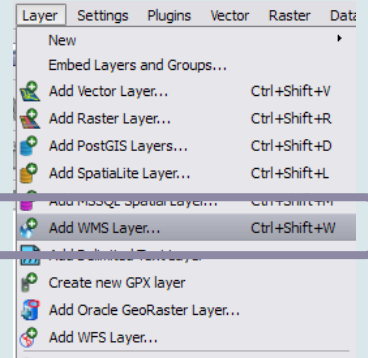
Adding the Richland County WMS Layers to QGIS

1. Open QGIS

To learn more about this free desktop GIS application and to download it, visit www.QGIS.org

2. Choose to add data from a WMS Server:

Open the layer menu and choose **Add WMS Layer** from the list



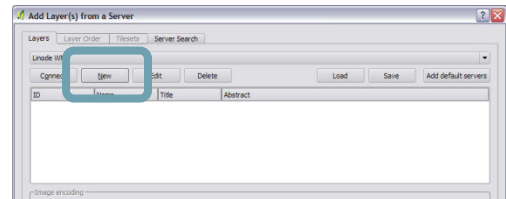
-OR-

Choose the Add WMS Server button from your toolbar



3. Select **New**

Skip to step 6 if you have previously connected to this WMS Server.



4. Add the following connection details:

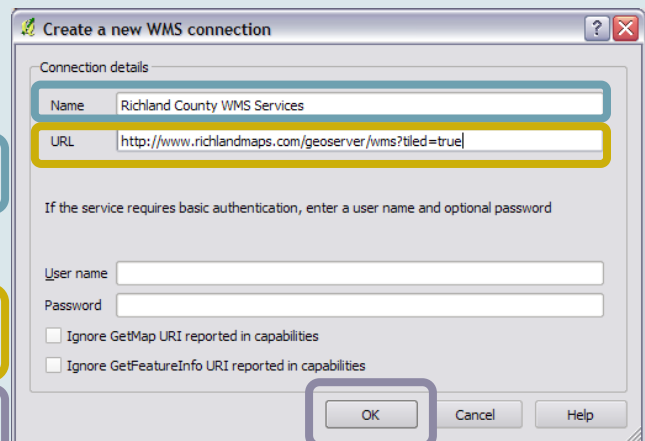
Name:

Richland County WMS Services

URL:

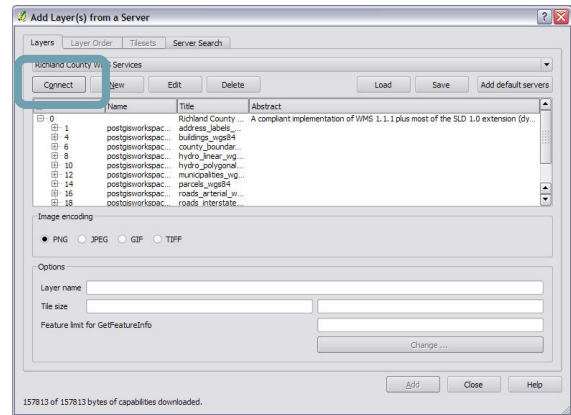
<http://www.richlandmaps.com/geoserver/wms?tilled=true>

5. Click **OK**



6. Make sure that Richland County WMS Services is selected from the layers dropdown & click the **connect** button

All of the layers that are available from this source will be listed.



7. Single click a layer to select it

8. Make sure that PNG is the selected image format

9. Click the add button to add this layer to your map

10. Click close to close the window

*Note: at this point it works best to **add layers one at a time**. Repeat the above directions to add all of the desired layers to your map.*

