

Adding the Richland County WMS Layers to ArcMap

1. Open ArcMap

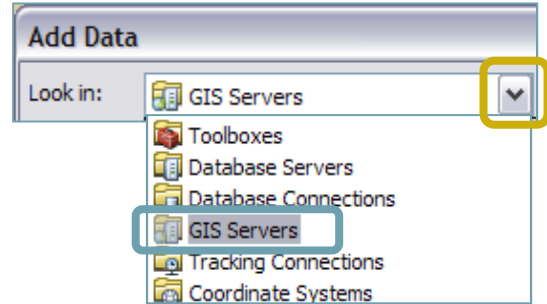


2. Click the **add data** button

3. Click the Look In: dropdown menu arrow

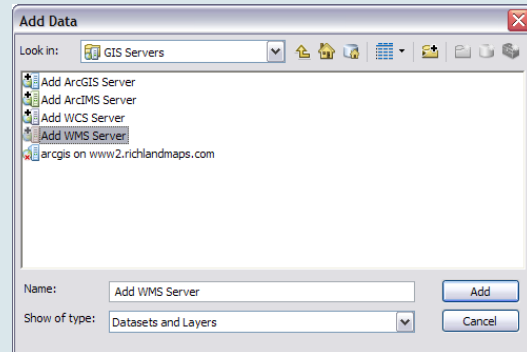
4. Choose **GIS Servers** from the list

Any existing GIS Server connections will be listed in the Add Data window



5. Choose **Add WMS Server** from the options listed

Skip to step 9 if you have previously connected to this WMS Server.

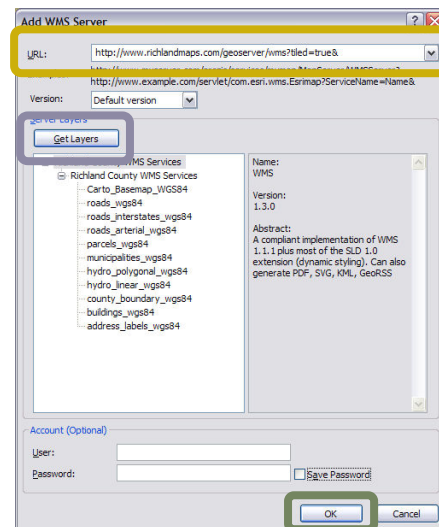


6. Enter the following after http://

www.richlandmaps.com/geoserver/wms?tilled=true

7. Click the **Get Layers** button to view all included layers

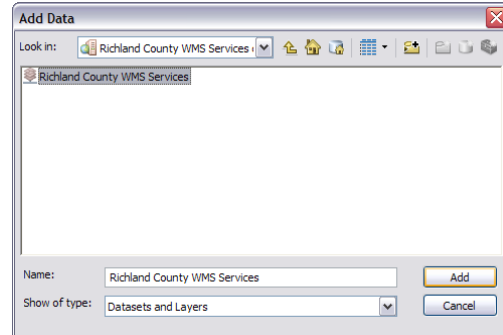
8. Click **OK**



The WMS server will appear in the GIS Servers list.

9. Double-click **Richland County WMS Services** on www.richlandmaps.com

10. Add all of the layer images by single-clicking **Richland County WMS Services** and then clicking **Add**



-OR-

11. Choose individual layer images by double-clicking **Richland County WMS Services** until a layer image list is displayed, choosing one, and then clicking **Add**

Add more than one layer image at a time by holding down the Ctrl key while you single click to select the information that you would like to view.

